

Adjust multiple Camera Raw images simultaneously

Adapted from Adobe Photoshop CS2 Total Training Video Workshop

Professional photographers often shoot a large series of images of the same subject, in the same lighting conditions, using virtually the same exposure settings. In Adobe® Photoshop® CS2, adjusting the settings for that series of Camera Raw images is fast, simple, and elegantly efficient.



Synchronize settings across images

There are two main methods of applying a group of settings to a series of images in the new version of Camera Raw. When you've created the settings you prefer for one photograph, and want to apply the settings to a group of other photographs, the answer is Synchronize.

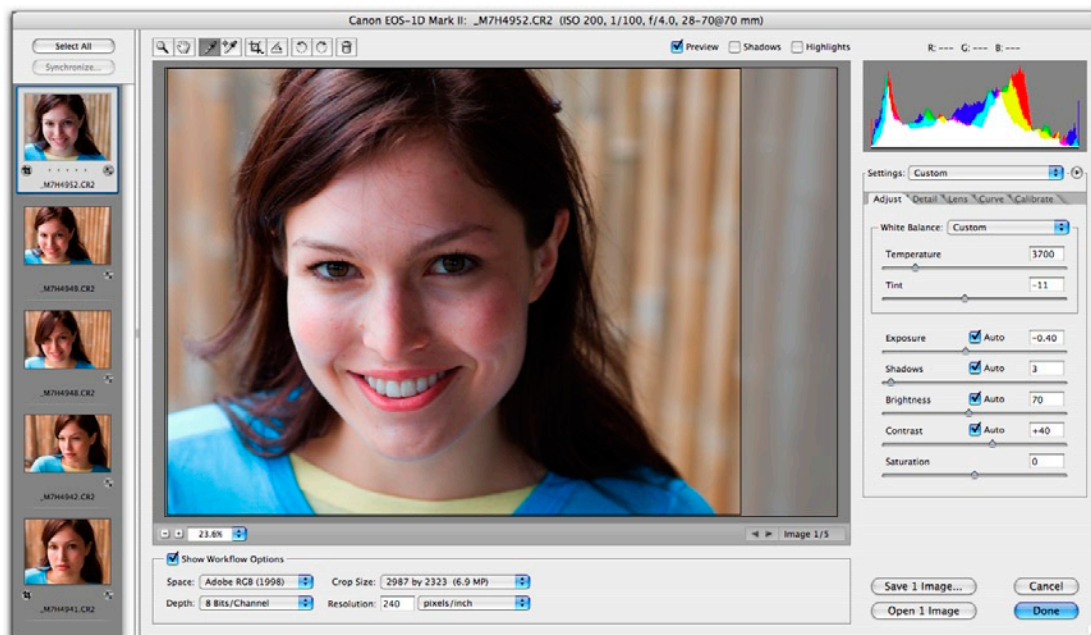
Create the settings to be synchronized

1 Open Adobe Bridge to a folder containing a series of Camera Raw images shot under similar conditions. Select all of the images, then choose File > Open in Camera Raw.

2 The new Camera Raw window opens with the group of images in a filmstrip at the left. The first image is selected and visible in the main preview area. Make some adjustments to the image that will be very visible:

- Select the new Crop tool  and drag to create a crop area in the image preview.
- Select the White Balance tool  and click a point in the image to redefine it as neutral.
- Drag the Exposure slider to the right to disable the new Auto feature and brighten the image.

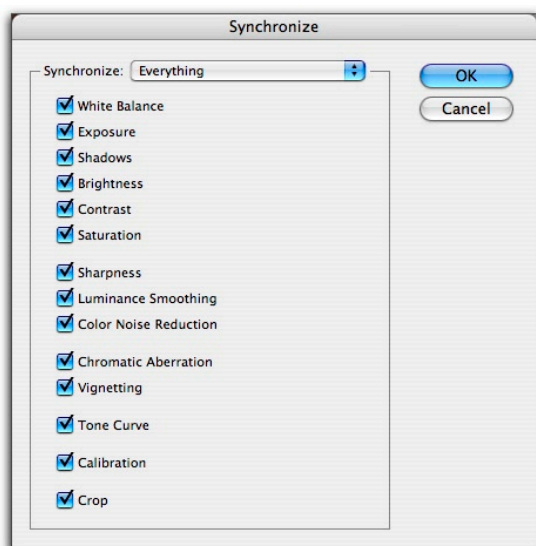
Note that in the filmstrip, only the active thumbnail changes.



The new multi-image Camera Raw makes it simple to apply advanced settings to as many images at a time as you choose.

Synchronize the settings across all images

- 1 Click Select All at the top of the filmstrip. Note that while this command selects all of the images in the filmstrip, the first image is highlighted differently to tell you it is still the active image.
- 2 Click Synchronize. In the dialog box, choose which Camera Raw settings to synchronize across the selected photos. You can choose which settings to synchronize or choose a group preset from the pop-up menu. For this example, choose Everything to synchronize all settings, then click OK.




Apply new settings simultaneously

As long as multiple images are selected in the filmstrip, any new changes you make to the active image will be applied simultaneously to all selected images, with no need for a separate synchronization step.

- 1 With all images still selected in the filmstrip, change some of the settings for the current image. Try switching to the new Curve panel and making fine adjustments to the tone curve. This panel works the same way as the traditional Curves feature in Photoshop CS2, with the additional aid of the image histogram that is displayed behind the curve.
- 2 Click Done to apply all changes to the image settings and return to the Bridge window. Note that the thumbnails for the images are updated in Bridge, and the settings icon is displayed for each image, reminding you that you have adjusted the settings for these images in Camera Raw.

Go further with Camera Raw

- Open five photos in Camera Raw, select three of them in the filmstrip, and click Save 3 Images. Adjust the naming, destination, and format options, and click OK to begin processing. Note you can immediately return to the Camera Raw window and start working on other images, even while the first three photos are being processed in the background.
- Select the Straighten tool  and drag in the preview to straighten the image.
- Select the Shadows and Highlights check boxes to see which pixels will be clipped as you adjust settings.

Adapted from Adobe Photoshop CS2 Total Training Video Workshop

© 2005 Total Training. Visit the Adobe Store for more by Total Training.

For more design resources for web, print, digital imaging, and digital video, visit Adobe Studio at <http://studio.adobe.com>.

Adobe, the Adobe logo, and Photoshop are either registered trademarks or trademarks of Adobe Systems Incorporated in the United States and/or other countries. All other trademarks are the property of their respective owners.

© 2005 Adobe Systems Incorporated. All rights reserved.

