

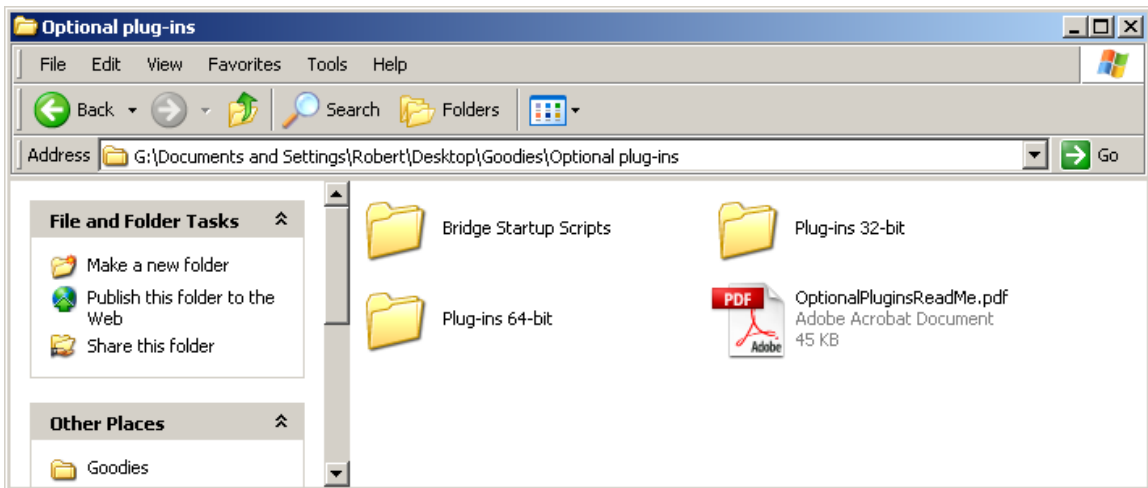
## Photoshop CS4 Installation of additional Plugins by R. Berdan Feb 2009

In photoshop CS4 Adobe has removed several useful plug-in such as Extract, Pattern Maker, Textures and Web Layouts presets. These are very useful in my opinion especially the extract feature – if you want to add them back please follow the instructions below to install these features. Also see Adobe Photoshop CS4 Read Me PDF for Optional Plug-Ins, Extensions and Presets. If you don't have the original install disk you can download a zip file from Adobe with all of these optional files at: Mac:

<http://www.adobe.com/support/downloads/detail.jsp?ftpID=4047>

Windows: <http://www.adobe.com/support/downloads/detail.jsp?ftpID=4048>

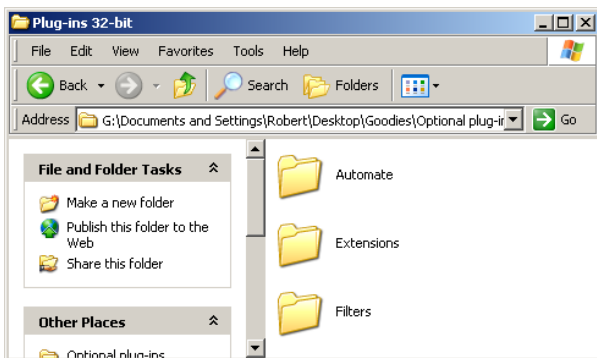
1. After installation of CS4 – right click on the install disk and open the Goodies folder – drag it to your desktop. (In Vista – you must have admin rights to install these additional plugins). If you don't have the disk you can download the Goodies folder from Adobe's web site – search for Optional plug-ins.



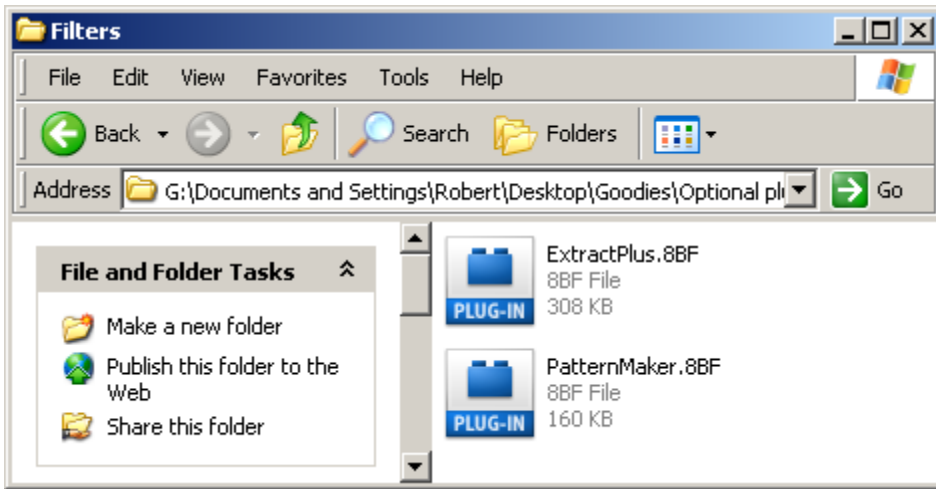
To install the Extract filter so it appears in the drop down menu:

1. Close photoshop CS4

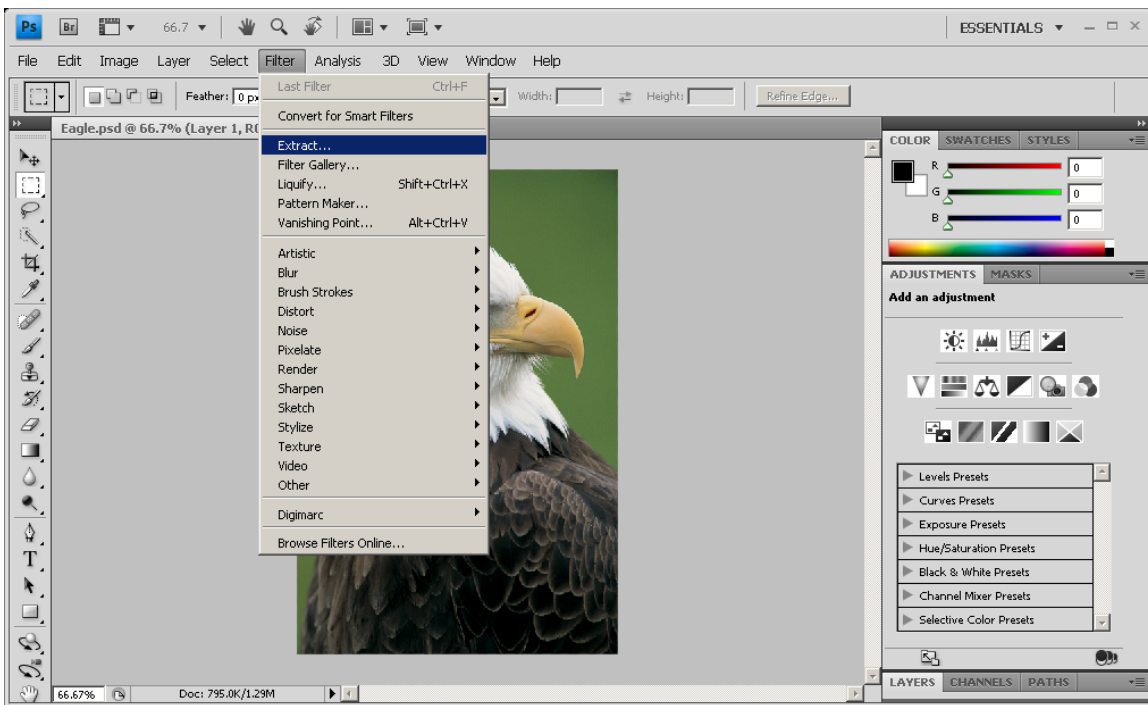
2. Open the Goodie/Plugins/Plug-ins 32 bit - you will see three folders – open the folder called Filters.



3. In the Filters folder you will see ExtractPlus.8BF and PatterMaker.8BF - drag these two plug-in files into your Adobe Photoshop CS4 folder >Plug-ins/Filters



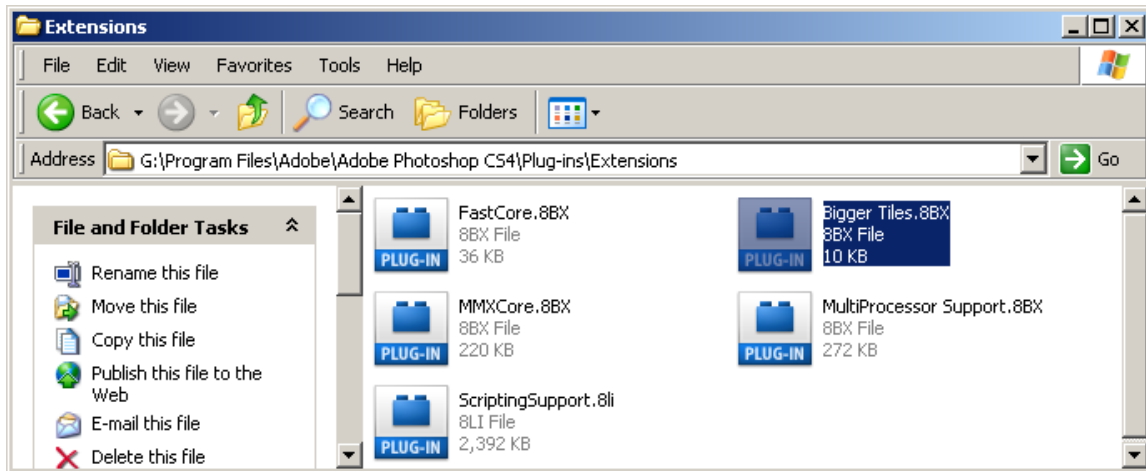
Restart Photoshop and the Extract filter and PatternMaker options should be available.



Extract filter will now appear in the drop down menu.

**Bigger Tiles – option** – if your computer has more than 1 GB of RAM memory, you can optimize Photoshop to take advantage of the extra RAM by adding an additional filter.

1. Close Photoshop. Go into the Goodies folder/Optional plug-ins 32 bit/Extensions/ select the Bigger Tiles.8BX plugin file and drag it into your Program Files/Adobe/Adobe Photoshop CS4/Plug ins/Extensions

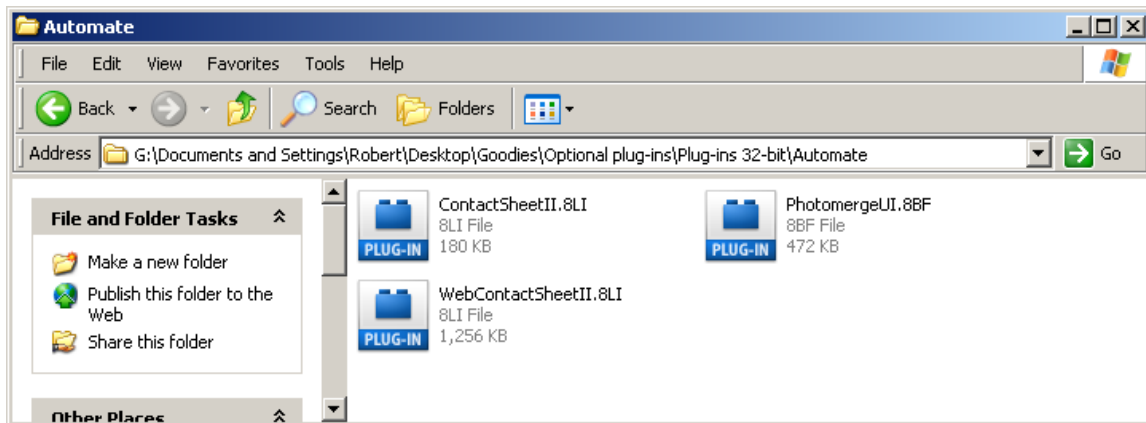


Your computer will not handle large files faster.

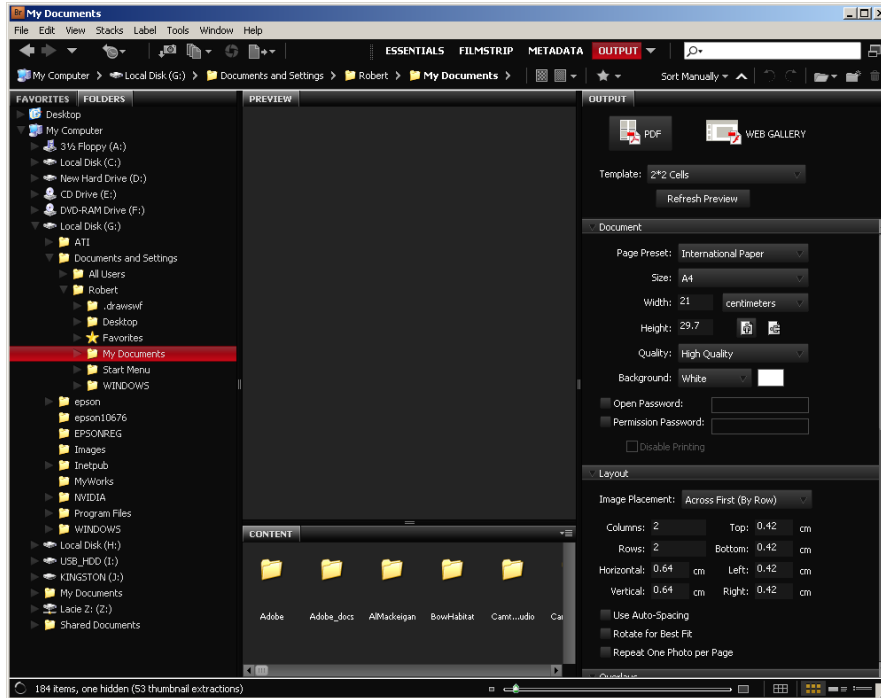
### Adding the Contact Sheet and Picture Package

The ability to create contact sheets and picture packages in older versions of photoshop was available from the File >Automate menu – in CS4 it has been moved to Bridge>Output. If you prefer (like me) to use the legacy method you need to do the following:

1. Goodies/Optional Plugins/Plug-ins 32 bit/Automate



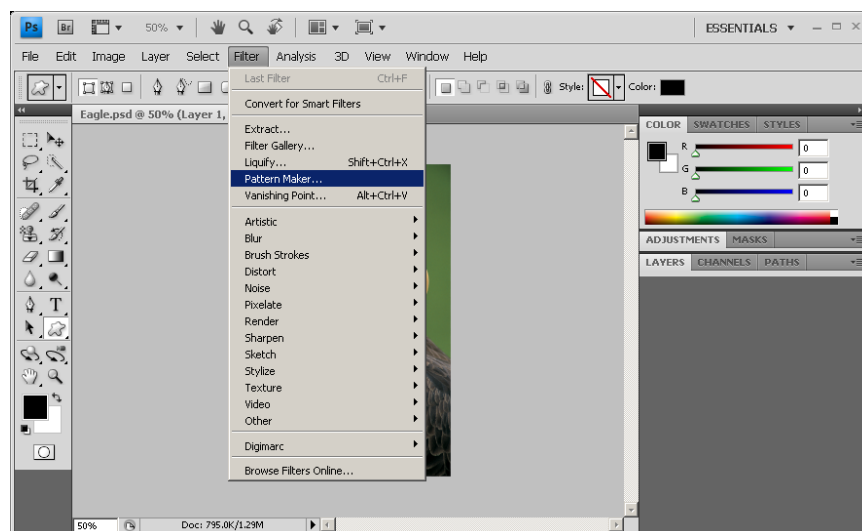
2. Drag the WebContactSheetII.8LI and the ContactSheetII.8LI file to Program files\Adobe\Adobe Photoshop CS4\Plugins\Automate folder (The Photomerge filter maynot have to be dragged if already appears to be in the automate menu – just leave it alone).



Shows output menu for Contact sheets and PDF slide shows is available in Bridge in CS4.

### To add the Pattern Maker which normally appears under Filter>Pattern Maker

1. Goodies/Optional Plug-ins/Plugins 32 bit/Filters/PatternMaker.8BF and drag the filter into: Program Files/Adobe/Adobe Photoshop CS4/Plug-ins/Filters/ and then start Photoshop CS4



### Textures for Texturizer Filter

1. Select Goodies/Presets/Textures – drag the Textures folder into Program Files/Adobe/Adobe Photoshop CS4/Presets

### **Adding Web Galleries and Textures Feature back to CS4**

1. Go into Goodies folder and select Goodies/Presets/Web Gallery - drag the whole web gallery folder into: Program Files/Adobe/Adobe CS4/Presets/

This will enable the web gallery feature

Do the same for the Textures folder

These notes were created in an attempt to simplify the instructions provided by Adobe in the PDF Photoshop CS4 and Photoshop CS4 Read Me for Optional Plug-in, Extensions and Presets – which you may also want to read if you have any problems with these optional features. It is not clear as to why they removed these features in the first place as I have found them to be quite useful and recommend adding them back.

### **Adding Picture Package Layouts**

1. Select Goodies folder>Presets>Layouts - drag the whole folder into Programs/Adobe/Adobe CS4/ Presets - restart photoshop and you will now see the picture package appear in the File>Automate menu