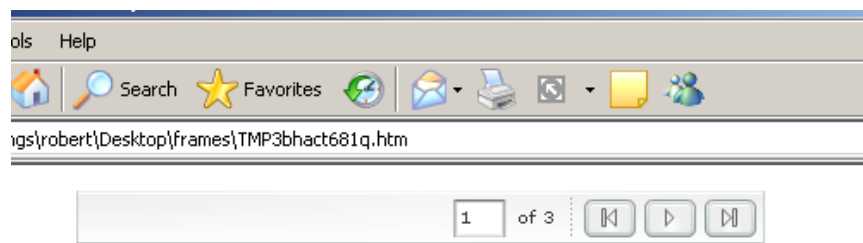


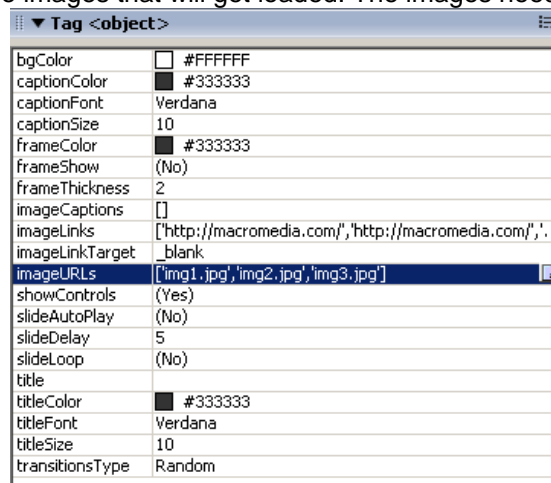
## Add an Interactive Slide show using Dreamweaver MX 2004 & CS3 by R. Berdan

Dreamweaver MX added a flash slide viewer that you can use to view images, set timing between images and select different types of transitions. The documentation on how to implement this viewer in Dreamweaver MX 2004 are not very good – hence this tutorial.

1. Create a web page in Dreamweaver and save it into your folder
2. Select > Insert>Media >image viewer – provide a name and save the image viewer into your web folder (e.g. slideshow.swf)
3. You should see a gray box with the flash icon in the page – the box dimensions are 400 x 325. If you view the player it will have a bar at the top with several buttons

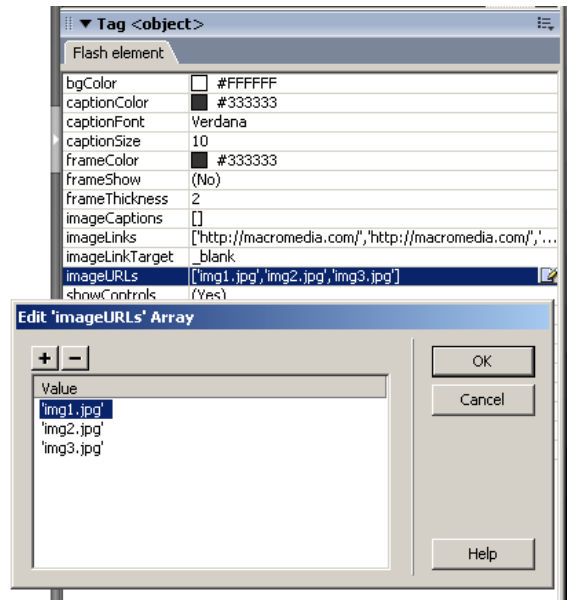


4. Select Window>tag inspector - this window controls the features of the flash image viewer including the images that will get loaded. The images need to be .jpg files

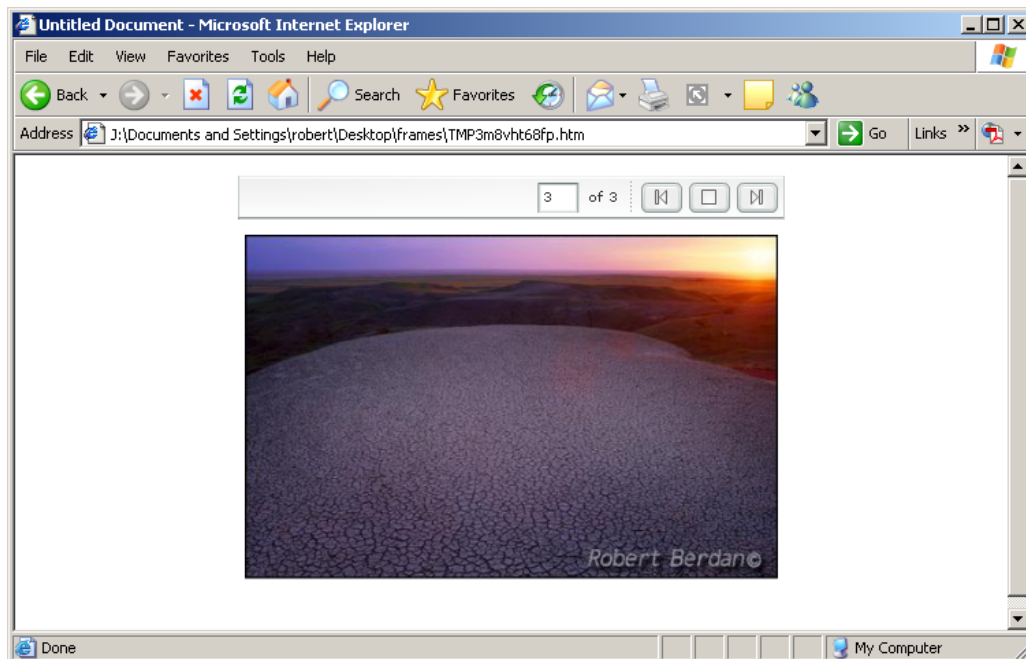


5. Select image URLs – on the right side click to bring up a pop up box edit image URLs use this box to select the images you want in your slide show. Modify the other features

as desired e.g. links, color, autoplay etc. Naming of the image files is essential in order for the viewer to dynamically load the images.



6. To make it easier you may want to name your images "img1.jpg, img2.jpg etc so that they follow a specific sequence). You must add additional images (+) symbol and select them by click on the value – you will see a folder icon – click on the folder icon that appears and select the image in your web site folder to add it to the slide show.



7. The image viewer will automatically size larger images down to size, but it will not make smaller images larger so you want images that are at least 400 pixels wide. You can turn the controls off or on, modify background color of the show, add a title, modify transitions fade, photo, iris – make the slides run automatically or only by controlling them.